

Indoor P1.9 SMD LED Video Display



LEDtronics LED-P1.9i-LX Ultra HD SMD series LED Video Displays offer ultra high-definition video quality with a 1.9mm visual resolution. Suitable for indoor applications and is your ideal digital display for banquets, entertainment, television, corporate, civic, sports events, exhibitions and conventions.

Simply put, LEDtronics P1.9i-LX SMD brings world-class technology that will capture more audience attention with enhanced features such as higher brightness, higher resolution, excellent color uniformity, picture-perfect clarity, wide viewing angle and higher refresh rates.

LEDtronics is a leading LED display specialist in Malaysia. Every day, many Malaysia's respected brands, small businesses, non-profits, government institutions, universities, shopping malls, media owners and a whole lot more depend on LEDtronics for their visual communication and digital display solutions.

Efficient, effective and reliable. Since 1997.

Product Features

SMD (3-in-1) LED Packages

Red, green and blue LEDs are blended within a single package to reduce the necessary viewing distance.

High Brightness LED

P-1.9i LEDs blend color more effectively and provides up to 1,000 nits of adjustable brightness.

High-Density Layout

With higher resolution of the number of full-color pixels within a screen area hence delivers true full-color lines and columns across the display.

Advanced Video Processing

LEDtronics 16-bit image processing provides 281 trillion colors capability at any brightness setting.

Video Control System

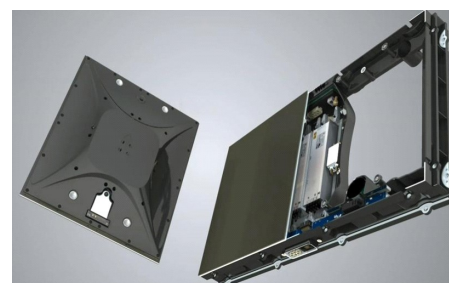
Equipped with video processor that supports SDI/HDSI input and video switcher that allows multiple input switches.

Any Shape, Any Size

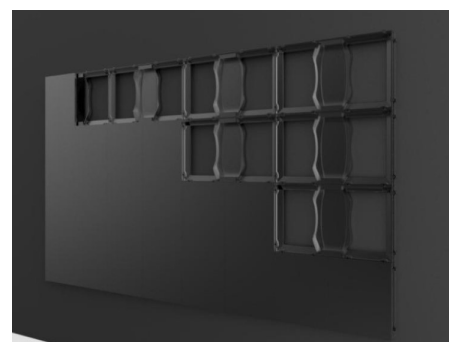
Module-based design allows for unique shapes and aspect ratios while eliminating all limitations on display size.

Technical Specifications

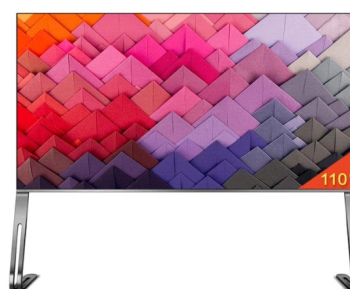
Model number	P1.9i-LX
Pixel pitch (mm)	1.906
Pixels per square meter	275,267
Color Processing Architecture	16-bit
Pixel configuration	RGB 3-in-1 SMD1010 (Black)
Color capability	281 trillion +
Color temperature	3,500° - 9,500° K (adjustable)
Refresh rate	>1,920+ Hz
LED lifetime	100,000 hours
Display intensity	1,000 nits (cd/m2) adjustable
Dimming capability	8-bit (256 levels of brightness control)
Horizontal viewing angle	160°
Vertical viewing angle	160°
Contrast ratio	5,000:1 +
Service access	Front / Rear
Cabinet construction	Die Cast Aluminum
Weatherproofing features	N/A
Weatherproofing (front/rear)	IP40 / IP21
Working temperature rating	-10°C to 45°C
Aspect ratio	16:9
Video frame rate	60 frames per second
Video compatibility	PAL, NTSC, HDTV
Video format	Composite, component, S-Video, SDI, HD-SDI
Data transmission to display	UTP Cat 6 up to 100m / fiber optic cable
Minimum viewing distance	2 m
Module configuration-pixels (WxH)	80 x 60
Module dimensions (WxH)	152 mm x 114 mm
Panel configuration-pixels (WxH)	320 x 180
Panel dimensions (WxH)	610 mm x 343 mm
Panel depth	71 mm
Panel weight (kg)	7.5
Maximum power per sq.m. (watts)	720
Average power per sq.m. (watts)	240
Video Processor	LEDtronics Video processor
Operating System	Windows 10



Separate Module and Cabinet Design



Typical Wall Mounting Installation



110 inch Ultra HD LED Display