

Outdoor P10.66 LED Video Display



LEDtronics LED-P10.66-U series LED Video Displays offer high-definition video quality with a 10.66mm visual resolution. Suitable for outdoor applications and is your ideal out-of-home digital display solution for delivering corporate communications, enhance company's reputation and their brand names.

Simply put, LEDtronics P10.66-U brings world-class technology that will capture more audience attention with enhanced features such as higher brightness, higher resolution, excellent color uniformity, picture-perfect clarity, and higher refresh rates.

LEDtronics is a leading LED display specialist in Malaysia. Every day, many Malaysia's respected brands, small businesses, non-profits, government institutions, universities, shopping malls, media owners and a whole lot more depend on LEDtronics for their visual communication and digital display solutions.

Efficient, effective and reliable. Since 1997.

Product Features

High Brightness LED

P10.66 discrete LEDs blend color more effectively and provides up to 7,000 nits of adjustable brightness.

High-Density Layout

With higher resolution of the number of full-color pixels within a screen area hence delivers true full-color lines and columns across the display.

Weather Resistant Design

P10.66 panels boast an IP-65 environmental rating to protect against wind-driven rain and dust.

Advanced Video Processing

LEDtronics 16-bit image processing provides 281 trillion colors capability at any brightness setting.

Video Control System

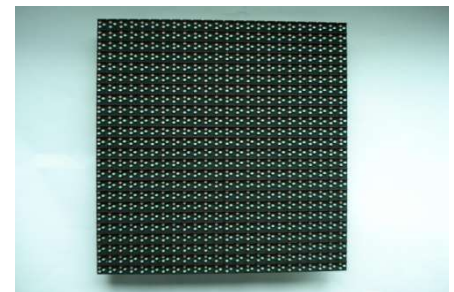
Equipped with video processor that supports SDI/HDSI input and video switcher that allows multiple input switches.

Any Shape, Any Size

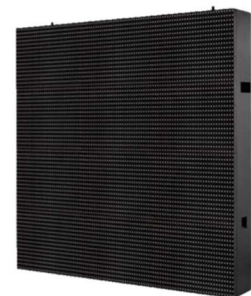
Module-based design allows for unique shapes and aspect ratios while eliminating all limitations on display size.

Technical Specifications

Model number	P10.66-U
Pixel pitch (mm)	10.66
Pixels per square meter	8,800
Color Processing Architecture	16-bit
Pixel configuration	1R, 1G, 1B LED
Color capability	281 trillion +
Color temperature	3,500° - 9,500° K (adjustable)
Refresh rate	>1,920+ Hz
LED lifetime	100,000 hours
Display intensity	7,000 nits (cd/m2) adjustable
Dimming capability	8-bit (256 levels of brightness control)
Horizontal viewing angle	110°
Vertical viewing angle	50°
Contrast ratio	1,000:1 +
Service access	Rear
Cabinet construction	Steel iron
Weatherproofing features	Sealed cabinet, potted modules, conformal coated display electronics
Weatherproofing (front/rear)	IP65 / IP54
Working temperature rating	-34°C to 49°C
Ventilation	Fans and filters
Video frame rate	60 frames per second
Video compatibility	PAL, NTSC, HDTV
Video format	Composite, component, S-Video, SDI, HD-SDI
Data transmission to display	UTP Cat 5 up to 100m / fiber optic cable
Minimum viewing distance	11 m
Module configuration-pixels (WxH)	24 x 24
Module dimensions (WxH)	256 mm x 256 mm
Panel configuration-pixels (WxH)	96 x 96
Panel dimensions (WxH)	1,024 mm x 1,024 mm
Panel depth	175 mm
Panel weight (kg)	55
Maximum power per sq.m. (watts)	900
Average power per sq.m. (watts)	350
Video Processor	LEDtronics Video processor
Operating System	Windows 7 / 10



Module: Front View



Panel: Side View



CuBIG Digital Series, Bangsar Shopping Complex